



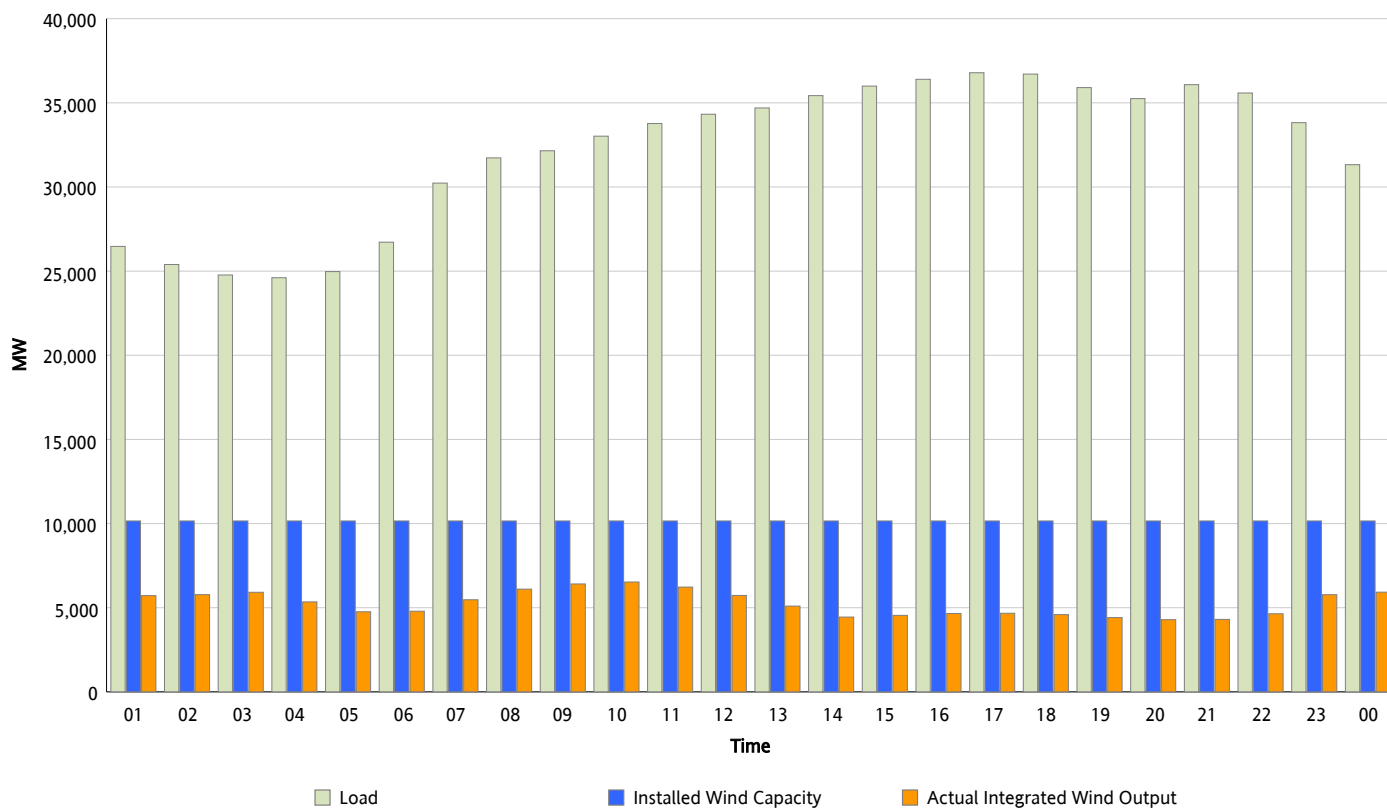
## ERCOT Grid Operations

### Wind Integration Report : 04/26/2013

Peak Load	36,790 MW
Load Peak Hour (HE)	17
Wind Over Peak	4,670 MW
Wind Record 02/09/13	9,481 MW
Max Wind Value*	6,912 MW
Wind Peak Time	23:15
Wind Integration %	21.6 %

#### Hourly Average Actual Load vs. Actual Wind Output

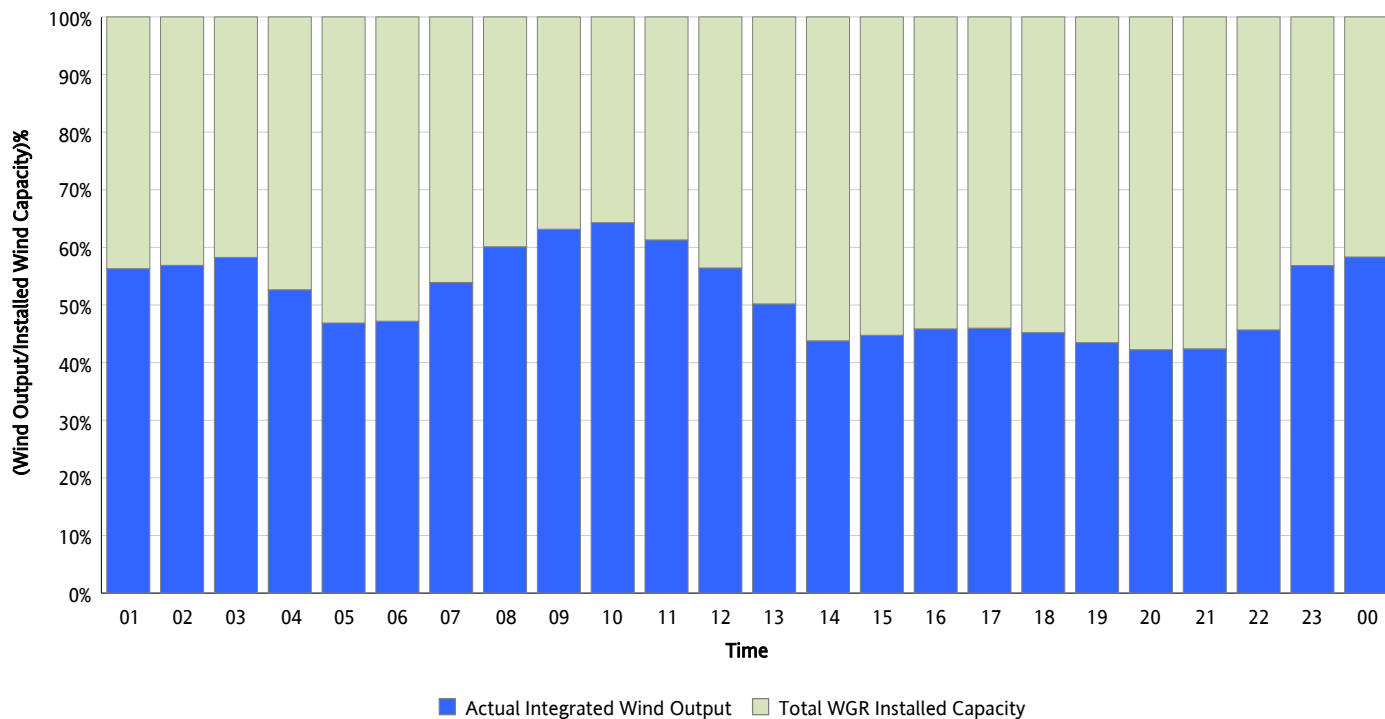
04/26/2013



\* Wind Record and Wind Max represent instantaneous values and the rest of the values are integrated over the hour

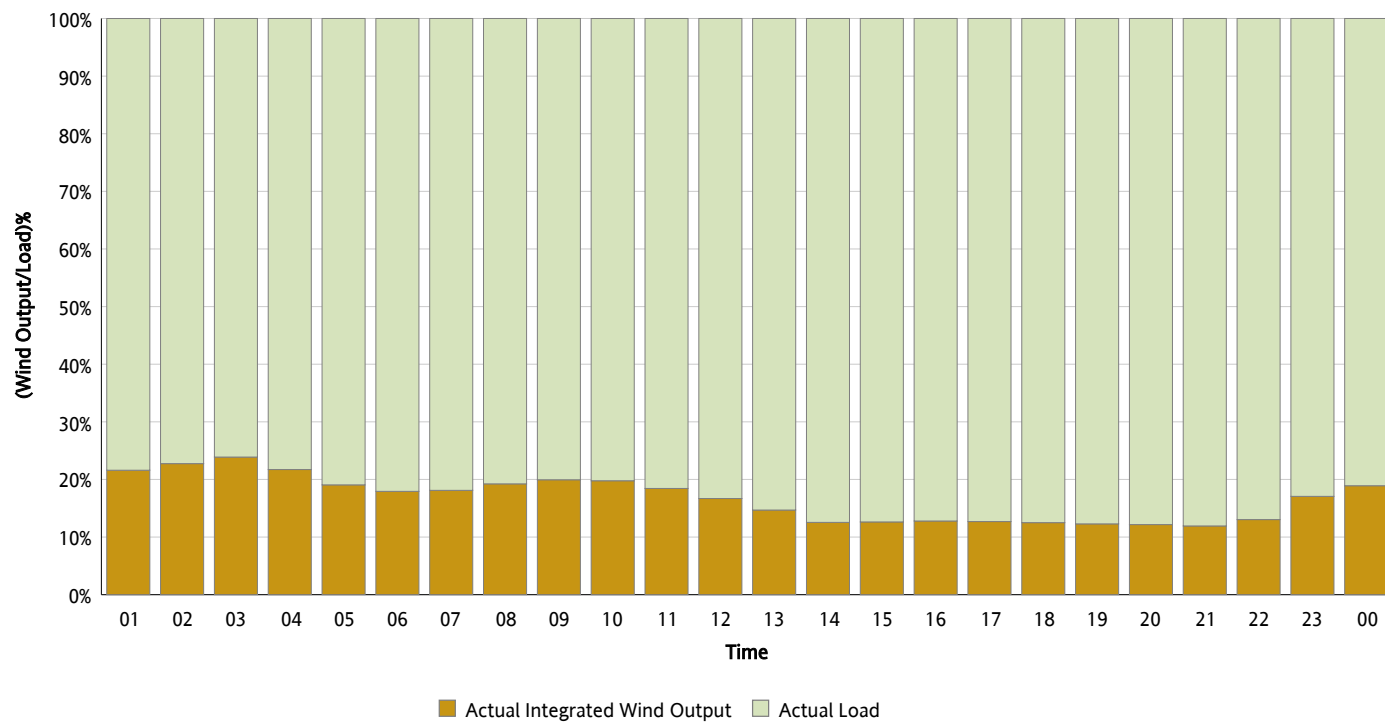
## Actual Wind Output as a Percentage of the Total Installed Wind Capacity

04/26/2013



## Actual Wind Output as a Percentage of the ERCOT Load

04/26/2013



## ERCOT Load vs. Actual Wind Output

04/19/2013 - 04/26/2013

